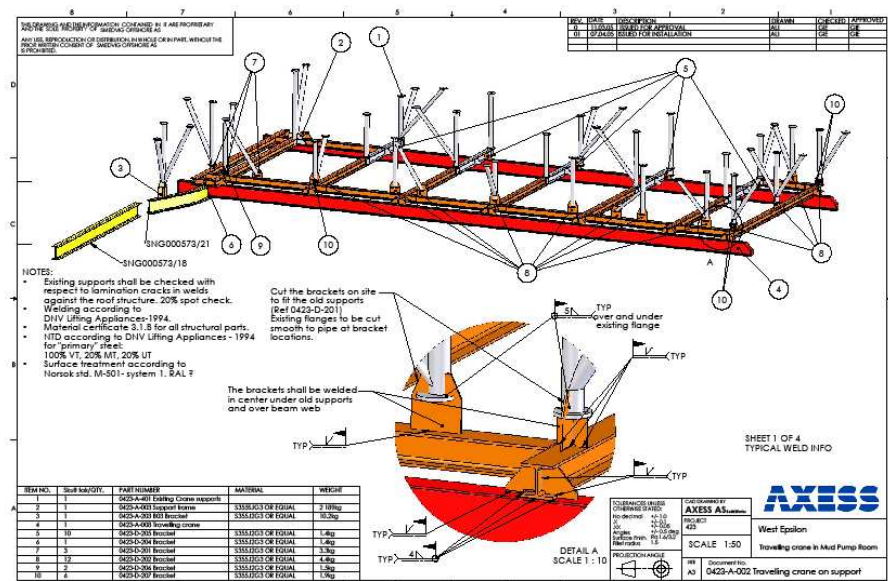




Axess Engineering Design (ED) Material handling

Axess Engineering Department is responsible for the development and supply of technology, tools and resources for efficient engineering execution of Axess multidiscipline projects. We specialize in execution of special projects related to offshore cranes and lifting appliances, advanced lifting/skidding operations, and rope access technique.

Through necessary competence and effective organization we are focusing in providing innovative and cost-effective solutions to our customers. We have extensive experience in assisting customers in projects with short execution time with necessary capability and resources. In all phases from engineering to installation we are incorporating smart installation techniques including Rope Access Technique as a competitive advantage.



Sheet 1 of 4

Print date 12.05.2005

Engineering & Construction

Typical material handling challenges solved by Axess:

- **Material handling Studies:**

Axess performs studies to show the challenges and come up with good solutions for handling material on offshore installations.

The study can include:

- Offshore survey
- 3D measurement
- Laser measurement
- Photos
- Design meetings offshore

- **Mud Pump Room**

Axess has delivered several different solutions on material handling in existing Mud Pump Rooms. The normal challenge is low height, small space and a lot of existing structure.

To solve the different challenges we have made:

- Manual overhead cranes (West Epsilon)
- Hydraulic jib crane on traverse rail (Polar Pioneer)
- Wagon on rails (West Alpha)

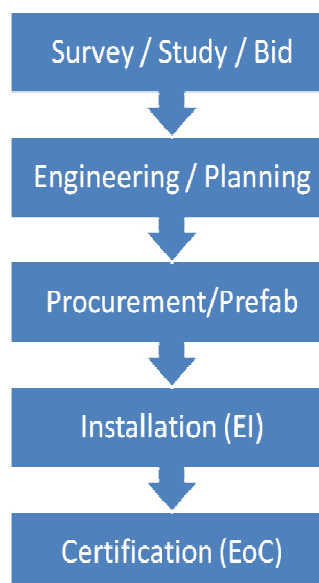
- **Custom made solutions:**

3D modeling – SolidWorks

Analysis – STAADPRO, ANSYS, MathCAD

- **Our Process**

Axess performs all tasks in EPCI projects including certification.



Axess is a leading provider of inspection & integrity management, and engineering & construction services.

The business within Axess comprises the offshore, maritime and energy industries.



Oscar Hanssensveg 5,
6415 Molde, Norway

PO Box 2197,
6402 Molde, Norway

Duty phone: +47 982 43 600

E-mail: post@axess.no

Internet: www.axess.no